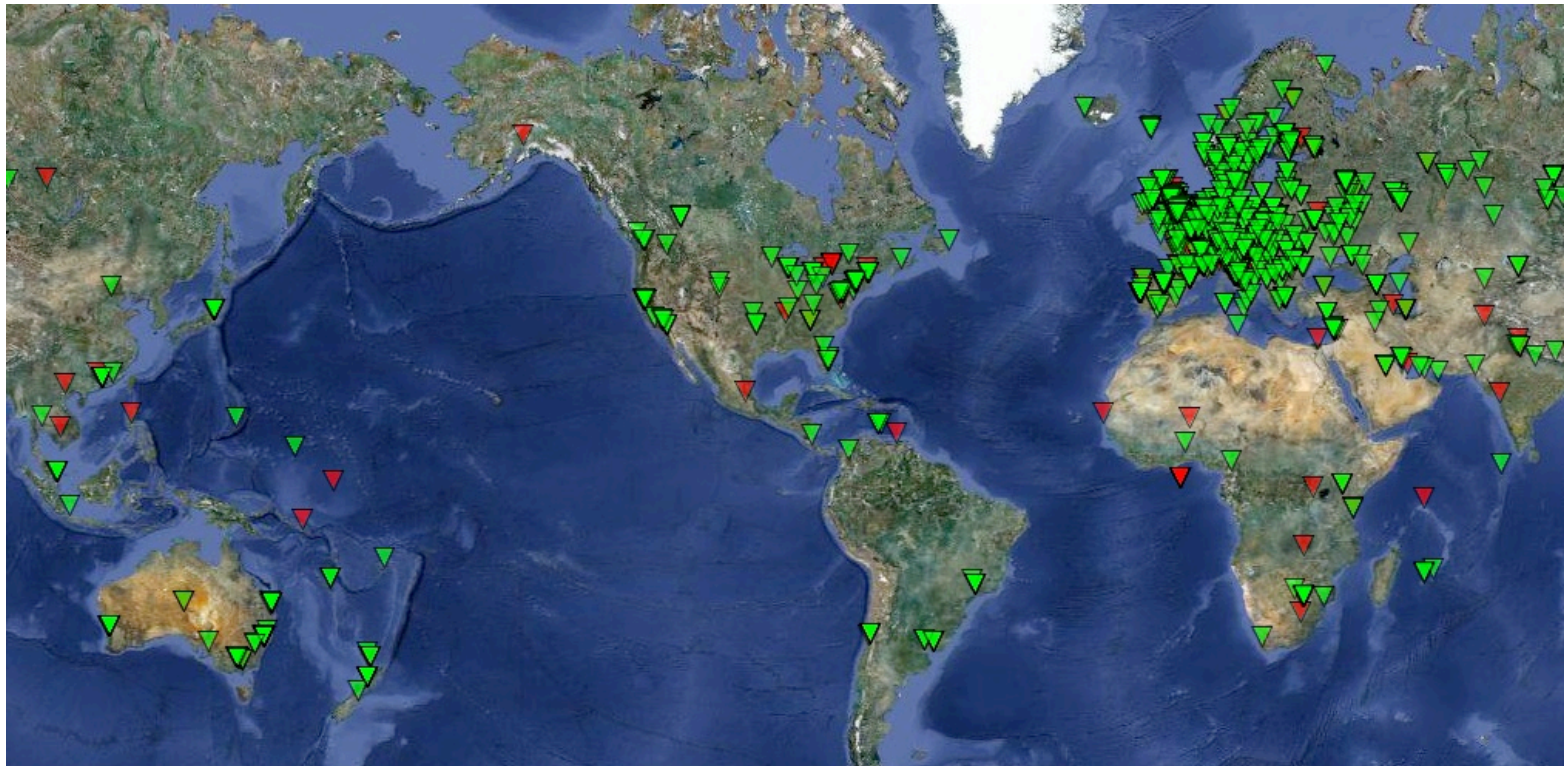


RIPE Atlas

<https://atlas.ripe.net>

RIPE Atlas: a network of active probes measuring the Internet infrastructure in real time, since 2010



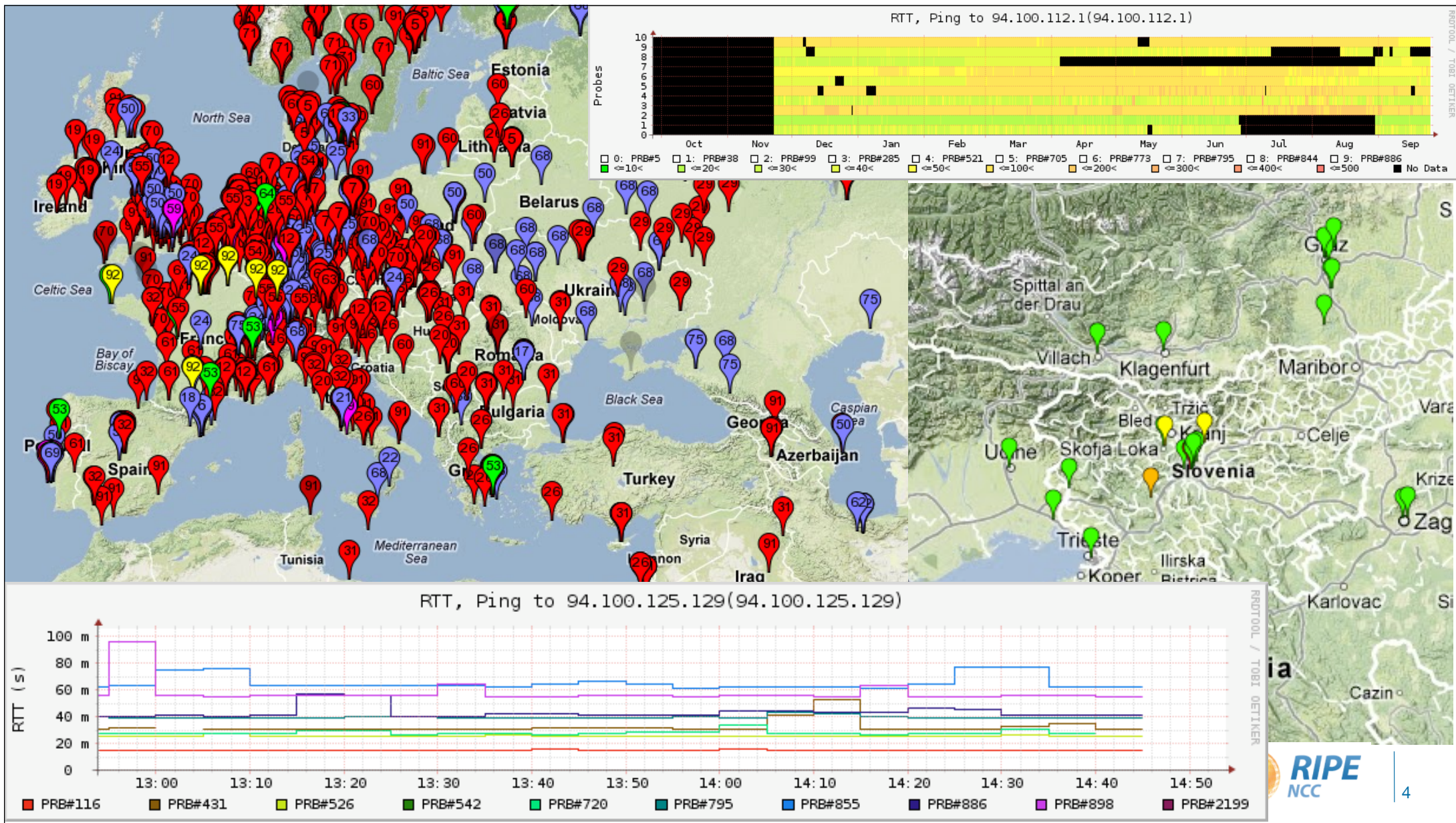
Small hardware probes

- For accurate maps we need many measurement nodes
 - Small probes
 - Easily deployable
 - USB powered
 - 24 x 365 capable
- Hosted and sponsored by **you**
 - ISPs, Internet Exchange Points, individuals...

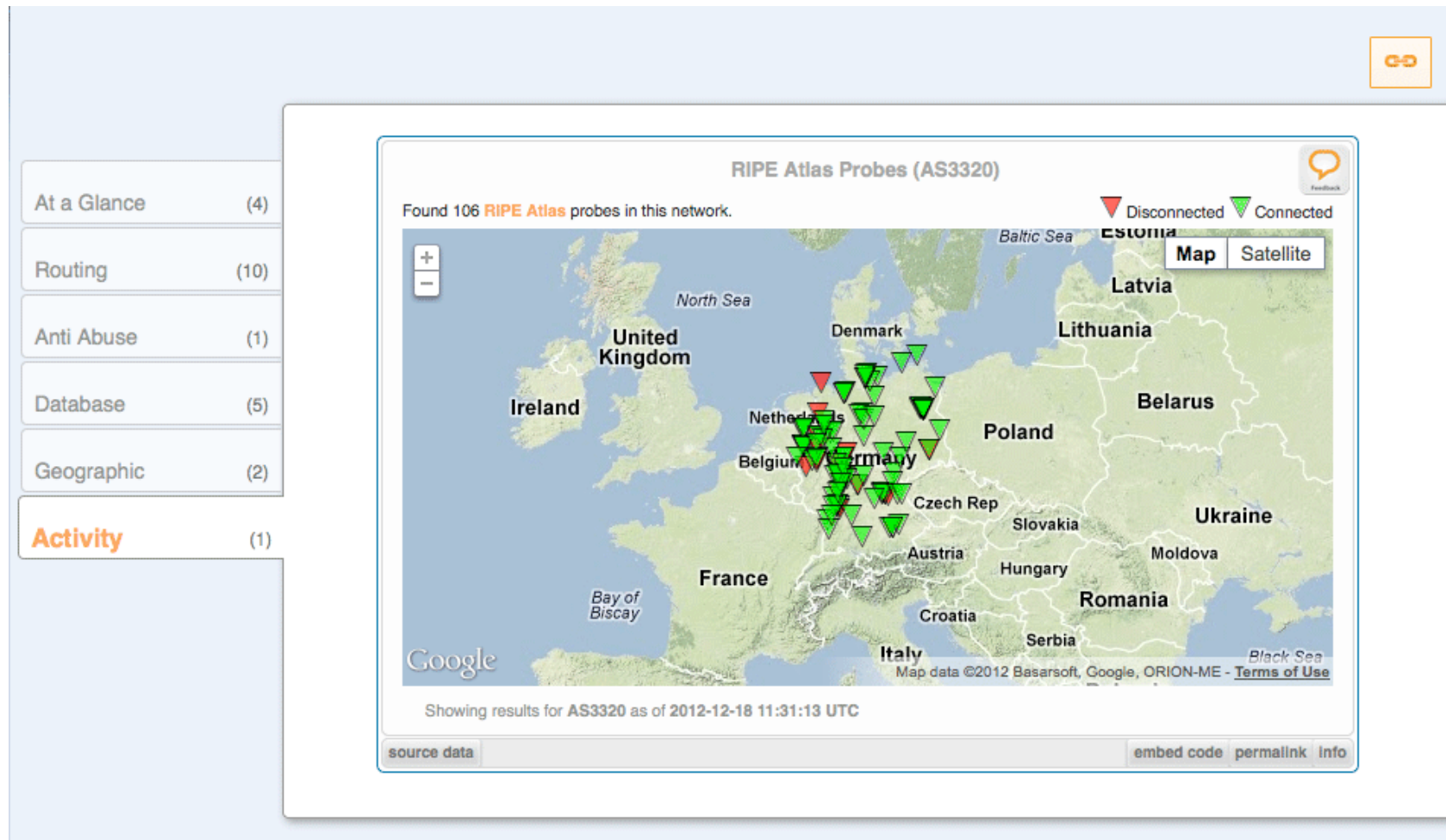


RIPE Atlas: Now (13-1-13)

- **2,400+** probes are up and running
- Data of built-in measurements available to **everyone**
 - In form of maps, tables, public probes data and API to download raw data
- Four types of customised measurements available to **hosts**
 - ping, traceroute, DNS, SSL: <https://atlas.ripe.net/udm>
- Anyone can become a RIPE Atlas probe host: **apply now**
 - <https://atlas.ripe.net/apply>



RIPEstat showing probes per ASN, IP prefix or country



User Defined Measurement

UDM Type and target

Ping

Ping6

Traceroute

Traceroute6

DNS

DNS6

HTTP

HTTP6

SSLCert

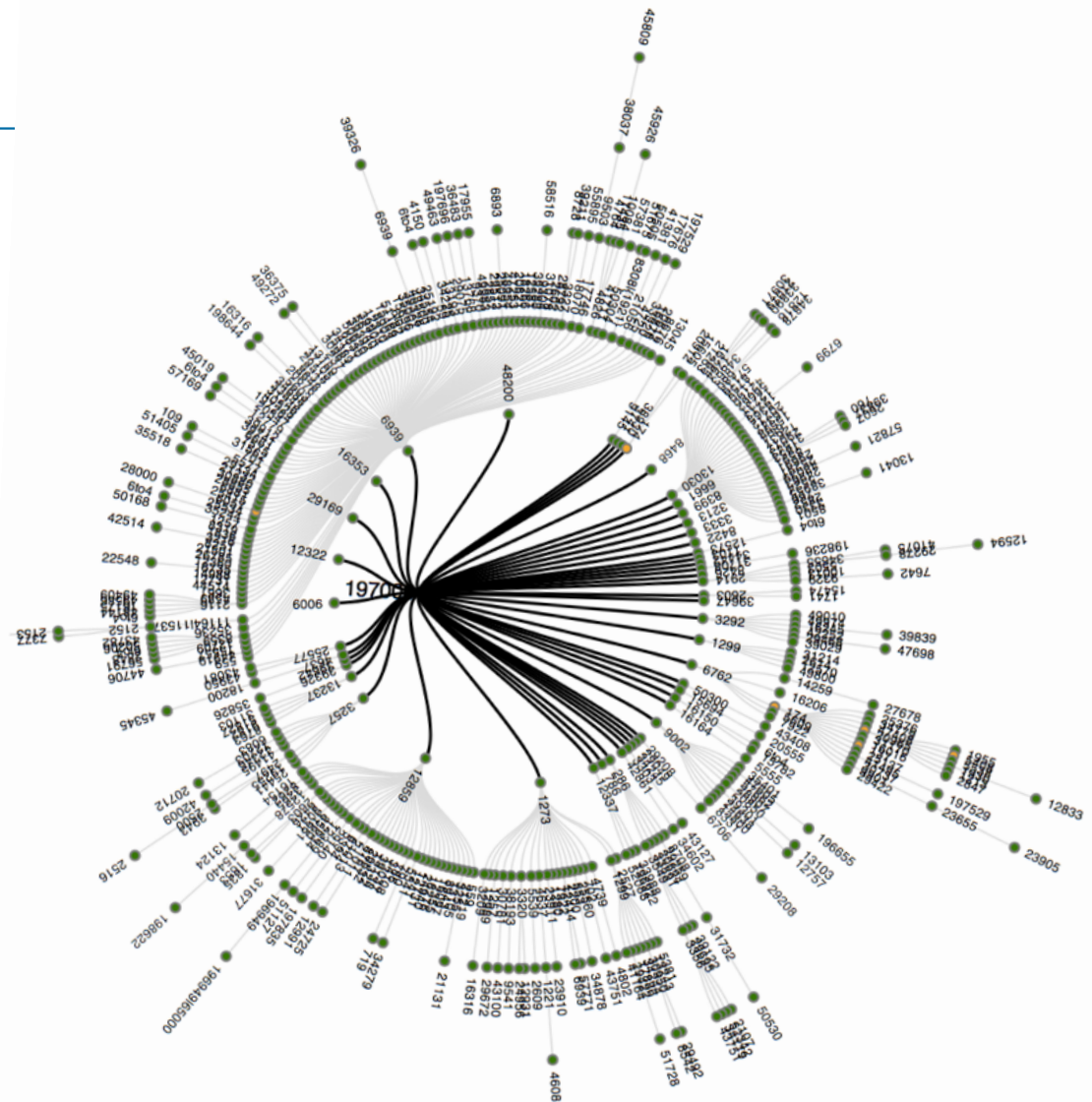
SSLCert6

Type	Interval	Description	Action
SSLCert			
Measurement interval, s:		1800	
Port:			
Public:	<input checked="" type="checkbox"/>		
Do not visualise:	<input checked="" type="checkbox"/>		
Description:			
Ok		Cancel	

Type	Interval	Description	Action
DNS			
Measurement interval, s:		300	
UDP Reply bytes:		512	
D0:	<input type="checkbox"/>		
TCP query:	<input type="checkbox"/>		
NSID:	<input type="checkbox"/>		
Use probe's resolver:	<input type="checkbox"/>		
Recursion desired:	<input type="checkbox"/>		
Query:	IN A		
Argument:			
Public:	<input checked="" type="checkbox"/>		
Do not visualise:	<input checked="" type="checkbox"/>		
Description:			

RIPE Atlas: for LIRs

- One-click measurement "**Test your IPv6**" is available to members of RIPE NCC
 - Beautiful interactive visualisation of traceroute results:
 - <https://labs.ripe.net/Members/emileaben/visualise-your-ipv6-connectivity-using-ripe-atlas>
- Members can get 1,000,000 extra credits
- Access to RIPE Atlas via the LIR Portal account



RIPE Atlas Roadmap: 2013 Plans

- Migrating **DNSMON** functionality to RIPE Atlas and RIPE Atlas anchors
- Improving presentation layer:
 - Representing RIPE Atlas data in **RIPEstat**
 - Possible to customise views and embed widgets in your dashboard
 - Mobile applications for viewing measurement results
- Expanding RIPE Atlas with **4,000** more probes (TP-link!)
- And many more features, based on user feedback!
 - Anomaly detection - customised notifications
 - HTTP / TCP measurements



The background of the slide features a light blue gradient with several IP addresses in a lighter blue, semi-transparent font. These addresses are arranged diagonally from the top-left towards the bottom-left. The visible addresses include 40:0:30:10, 93.0.19.21.15, 240:11::c100:13, 0:1315 193.0.0.1, and 240:0:53::193. The text 'RIPE Atlas community' is positioned on the right side of the slide, underlined with a thin yellow line.

RIPE Atlas community

Community Information

General information about Atlas members and their contributions.

Always Up

Big Spenders

New Arrivals

These are the new users in the past ten days. Note that the flags are representative of their probe locations and not necessarily their nationality.



Jack Pennings



BECHA (Xs4all)



Sonny Piers



Kiran Chittimaneni



Ruud Verstijnen



Nikolay Melnikov



Philip Basford



Vegard Haaverstad



Mark Martin



Dorothy Gellert



RIPE Atlas is sponsored by...



RIPE Atlas: Get in touch!

- Get a probe: **atlas.ripe.net/apply**
- Direct feedback:
 - Mailing list for active users: **ripe-atlas@ripe.net**
 - Measurement, Analysis and Tools working group
<http://www.ripe.net/ripe/wg/mat/> **mat-wg@ripe.net**
 - Questions (ticket queue): **atlas@ripe.net**
 - **#RIPEAtlas** on Twitter (and/or **@Ms_Measurements**)
- **<https://atlas.ripe.net>**