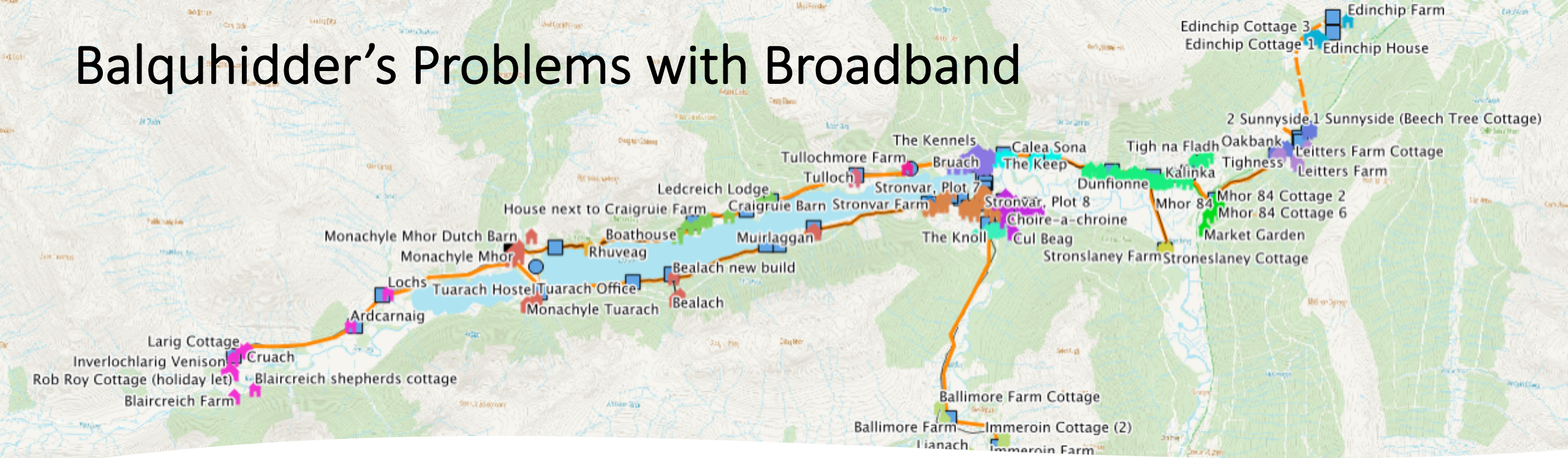




Balquhiddar Community Gigabit Broadband

UKNOF November 2020

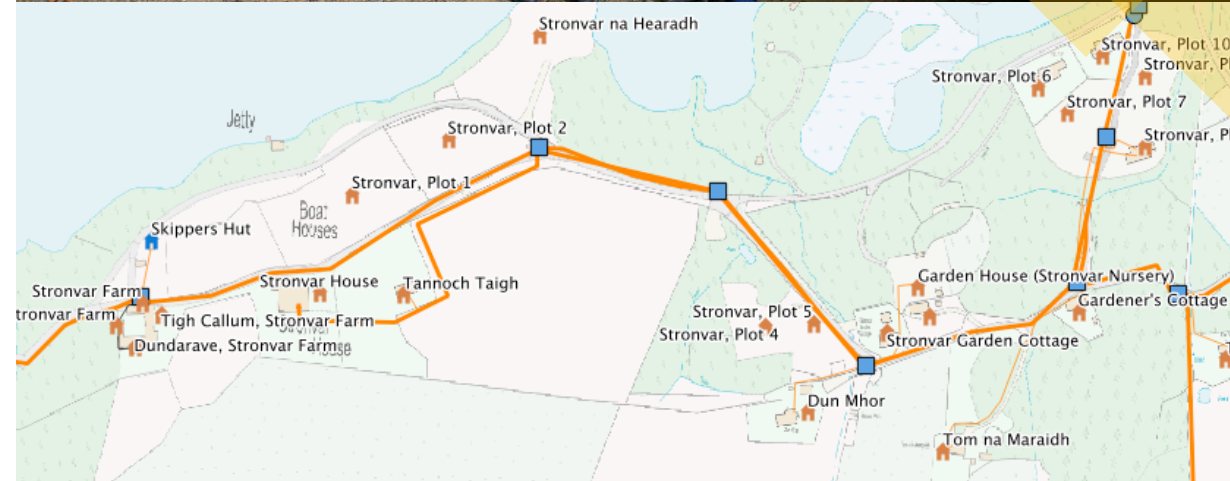
Balquhiddar's Problems with Broadband



- 2007 – Community Council survey identified broadband provision ranging between 0 to 4 Mbps but with the vast majority under 2 Mbps.
- March 2015 CBS announced that they would fund a ‘wireless’ broadband project in Balquhiddar up to €200,000 *de minimis* level.
- We believed that with community volunteers a fibre broadband solution was possible and amended the ITT to expand the scope. Received two unrealistic wireless offers but a fibre offer from Bogons Ltd fitted requirements and a partnership was formed.
- Two years of further contractual and funding negotiations with CBS finally folded with a legal dispute and no funding.
- Stirling Council, LEADER and the promise of a new DCMS Voucher Scheme allowed us to start the community build with Bogons in the autumn of 2017.

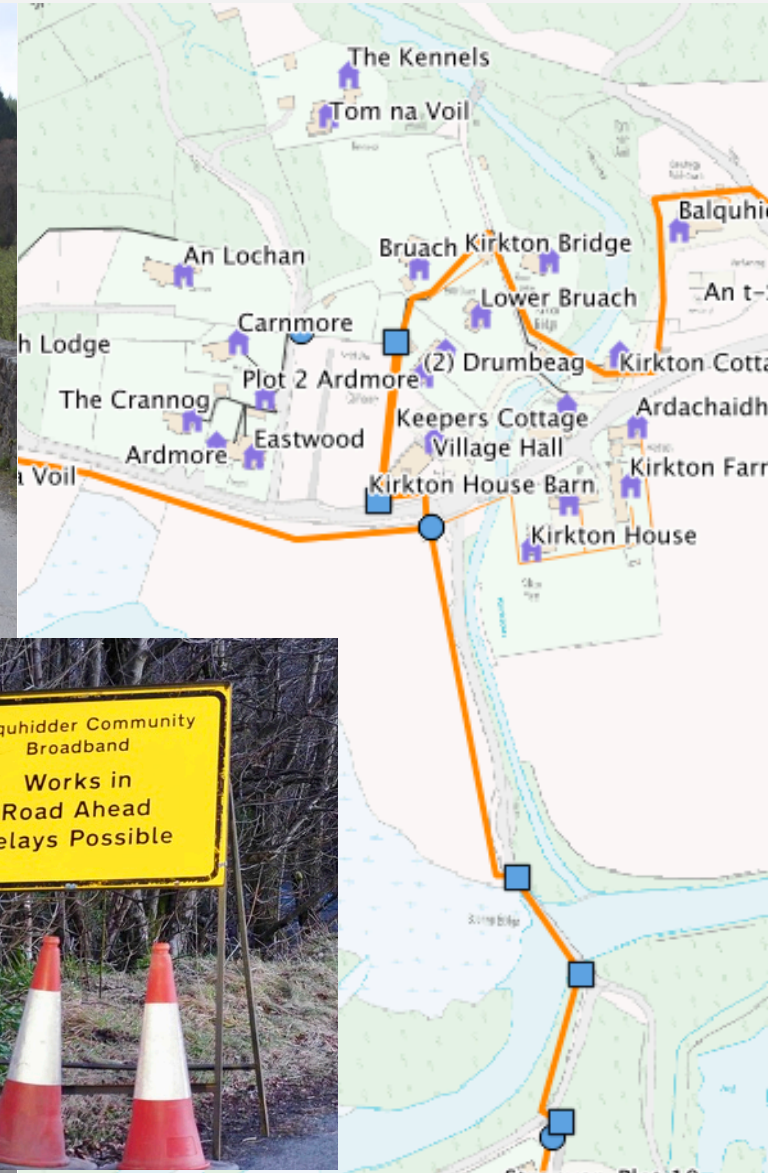
Work begins for Stronvar

- In 2017 the ESN project brings fibre right into the glen next to where we could site the Stronvar Street cabinet and allowed us to replan the project and network build.
- September 2017 Openreach deliver fibre to the cabinet.
- We start laying the Stronvar conduit and blowing fibre.
- First connection – Gardener's Cottage December 2017.
- Then slowly connect the other 15 properties ready for a connection.



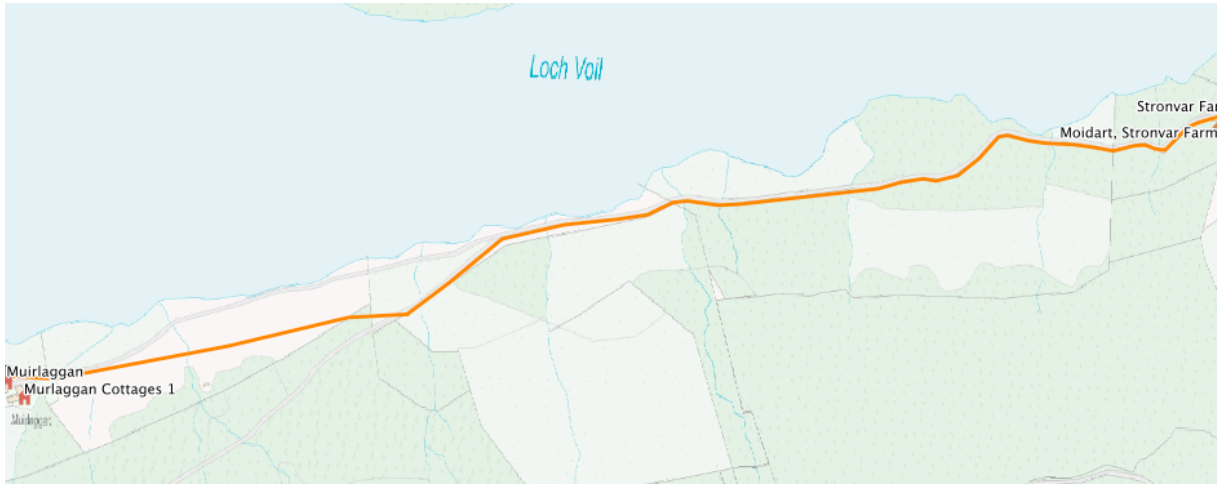
Connecting to the Village

- This meant leaving the private roads of Stronvar.
- Arranging for a contractor to carry out all the road crossings we would need for the whole project.
- And arranging the crossing of the two listed bridges.
- One being Stronvar bridge shown opposite.
- Building the second cabinet at the Village Hall.
- Allowing 22 property connections around the village.



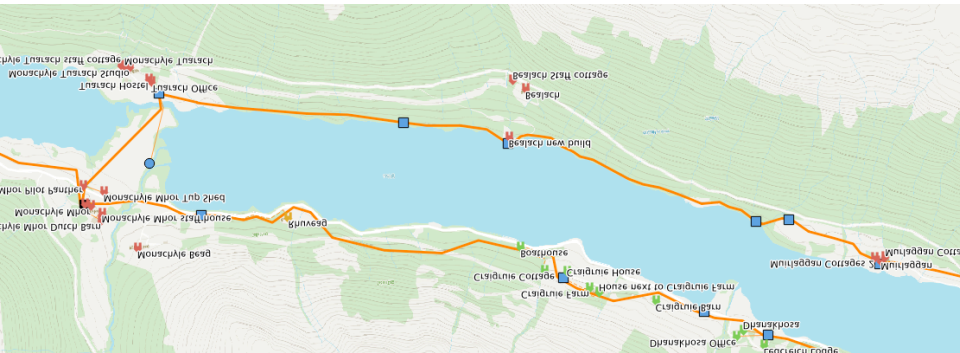
South side to Muirlaggan

- From the pit at Stronvar Farm to Muirlaggan Farm.
- Part along the forest fence and then across the forest road.
- Finally buried across Muirlaggan Farmland.
- Allowing 2 house connections.



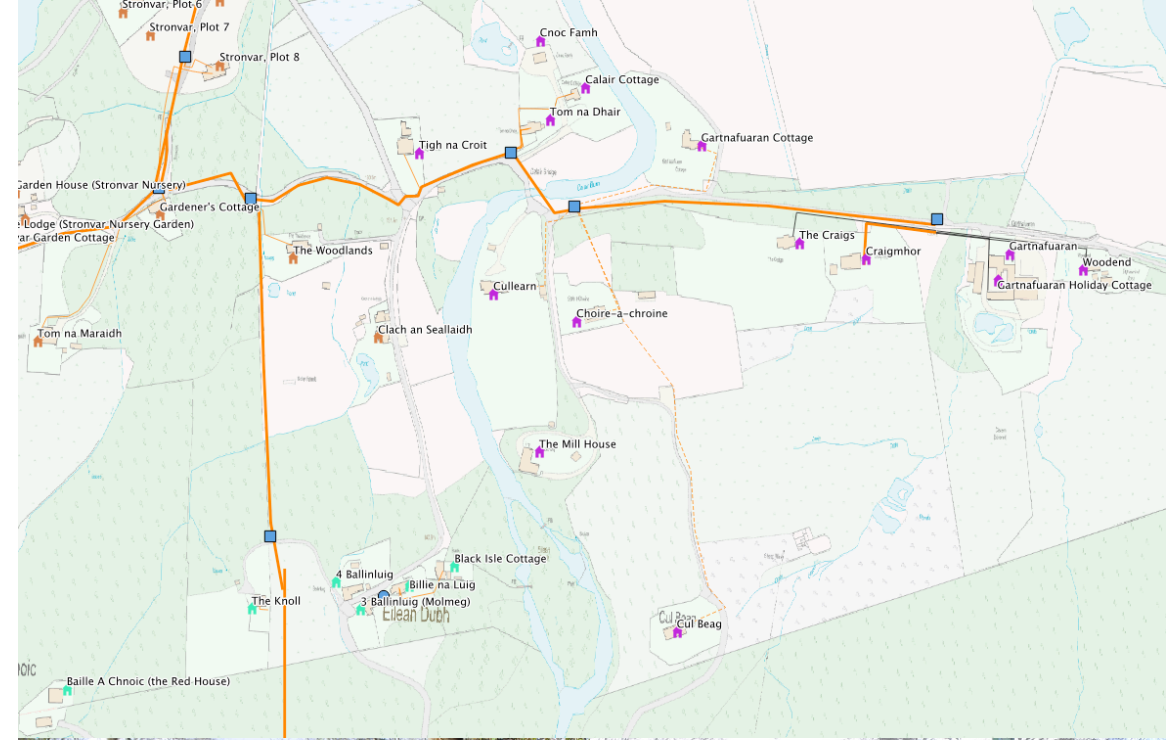
Monachyle Festival

- Monachyle Mhor a boutique Hotel on the north side holds a festival with 5,000 visitors in May.
- We blew fibre to Muirlaggan and provided a wireless link.



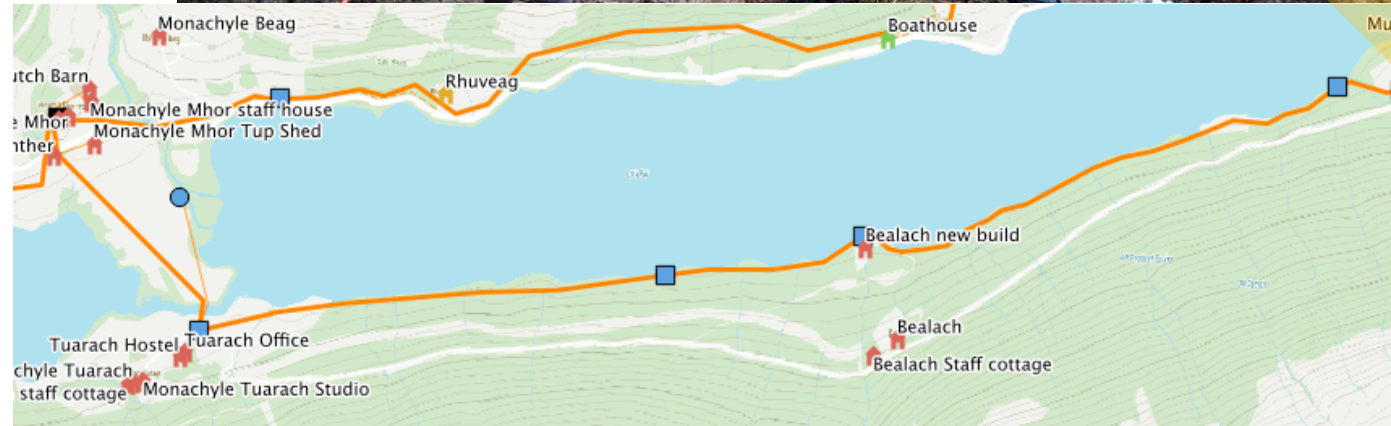
Stronvar East

- The Council changed its mind refusing permission to bury ducting on Calair Bridge roadway.
- They wanted us to attach the fibre to the outside of the bridge.
- As a listed building this needed planning permission from the National Park.
- Permission to hang it temporarily on a wire until permission given.
- 21 properties to be connected.



Completing the South Side

- This involved a contractor digging 4k through Muirlaggan Forest along an ancient Peat Road.
- Done in two sections. 1) From Muirlaggan to Bealach. 2) From Bealach to Tuarach.
- Then crossing the river to the North side.
- In each section a contractor cleared a path. We pulled out Pre-blown fibre and then the contractor covered it.
- Allowing 5 house connections.



Completing the north side loop

- This was a 3k pull of pre-blown from Craigrue to Monachyle Mhor.
- Mostly along forest fence but about 700m along a digger dug trench over open hillside and a gorge crossing.
- Started in the middle and pulled back to Craigrue. Two teams with one pulling to the gorge and then the second team pulling to Craigrue.
- Finally pulled from the middle to Monachyle.
- Allowing 21 house connections.



Mhor 84 to the Village

- 4k blow over the April 19 holiday weekend.
- Quite a difficult blow for various reasons.
- Over 4 days with the volunteers - the equivalent to 40 days or 1600 hours of work.
- Because of the number of short blows it involved it was the equivalent of a 19k blow.
- 25 house connections.



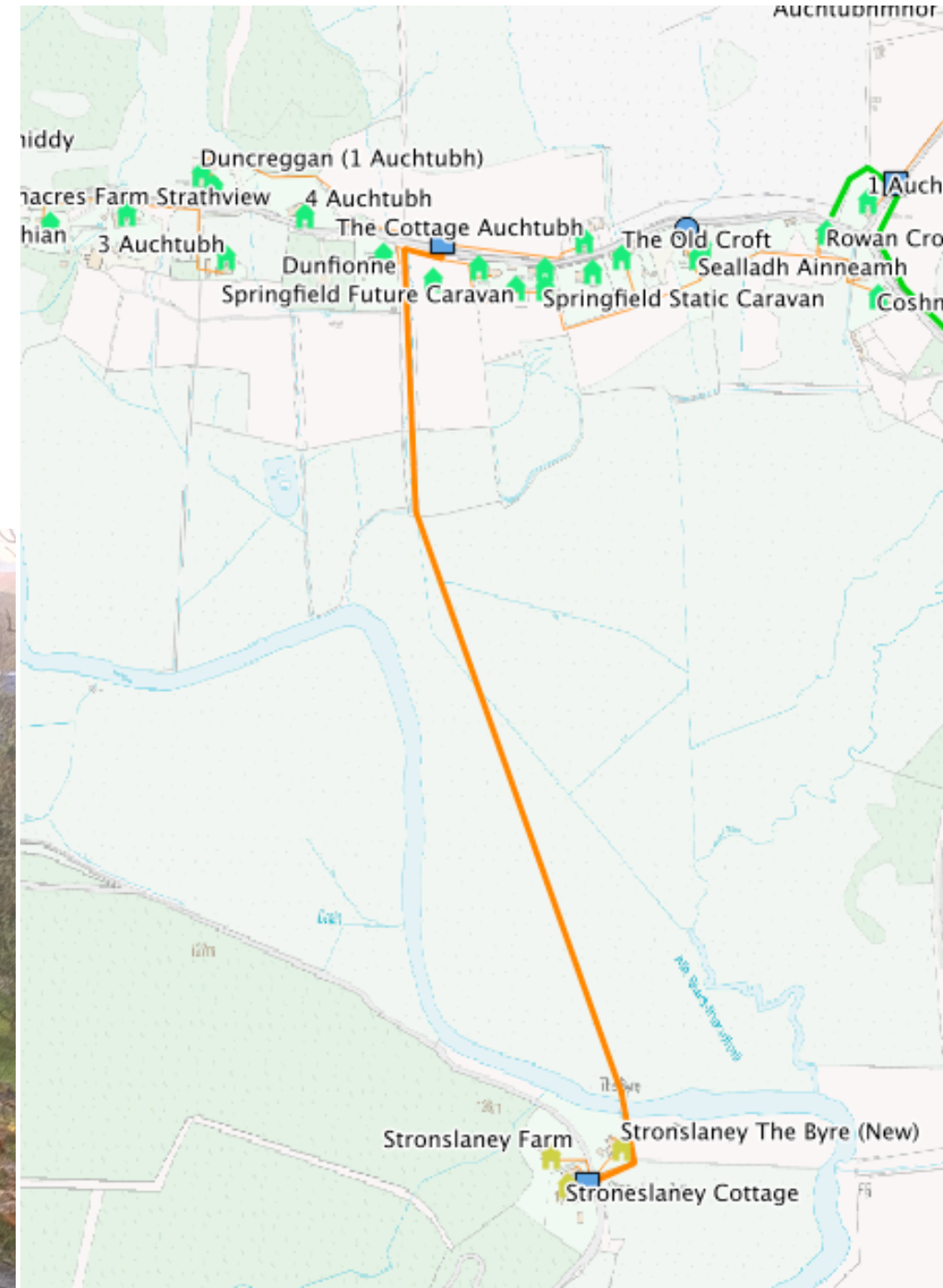
Balquhiddar Station

- A 2k pull of pre-blown fibre along side the A84 and along a forest fence and the old railway line.
- Negotiations with BEAR for the route alongside the A84 and the use of conduits to cross the road.
- Negotiations with Sustrans and Forest and Land Services (Scotland) for the route along the forest fence and the old railway line.
- 15 houses connected.



Stronslaney

- 3 isolated properties on the south side of the glen.
- The owner of one of the properties intended laying a mains water connection from the north side and we were able to lay conduit in the same trench.
- Another river crossing and 3 properties connected.



Monachyle to Inverlochlarig

- The final stretch on the north side
- Allowing 7 house connections.



Ballimore and Immeroin

- The final section.
- A 2k blow from Immeroin Farm to the pit at The Knoll.
- Forest track to be crossed.
- 5 connections.

